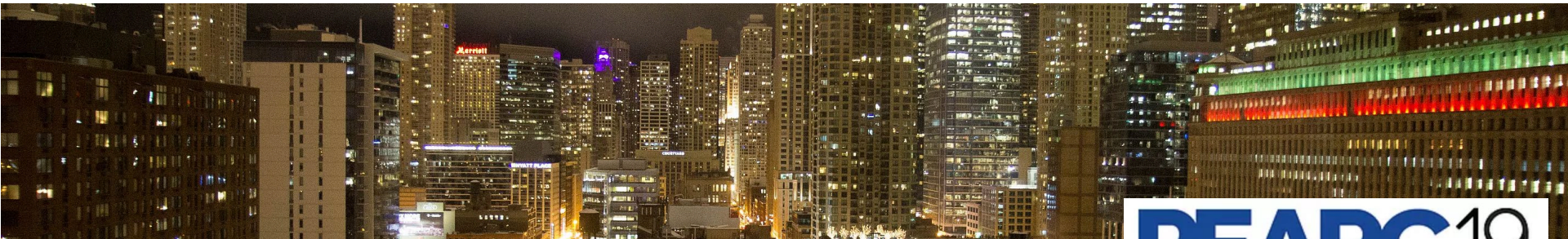


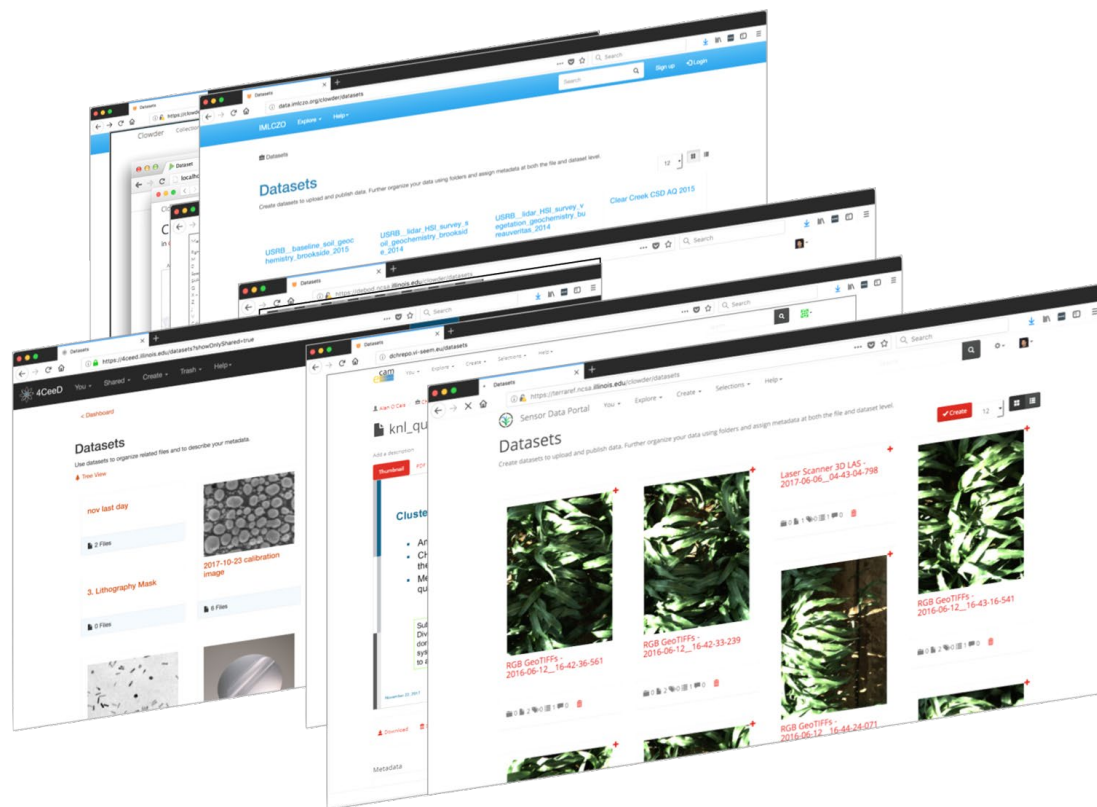
Clowder

2019 All Paws Meeting

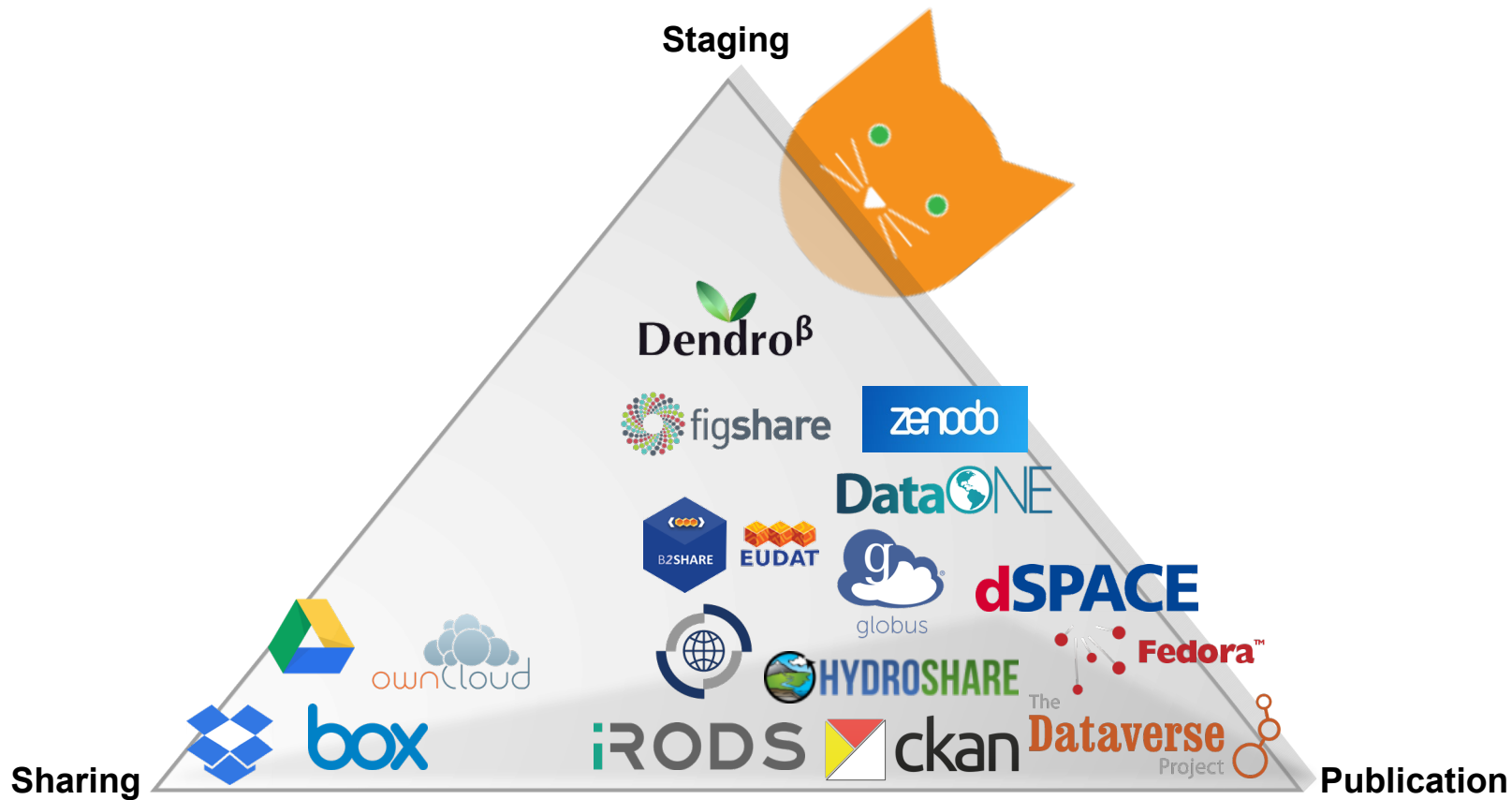


PEARC19

From Medici to Clowder



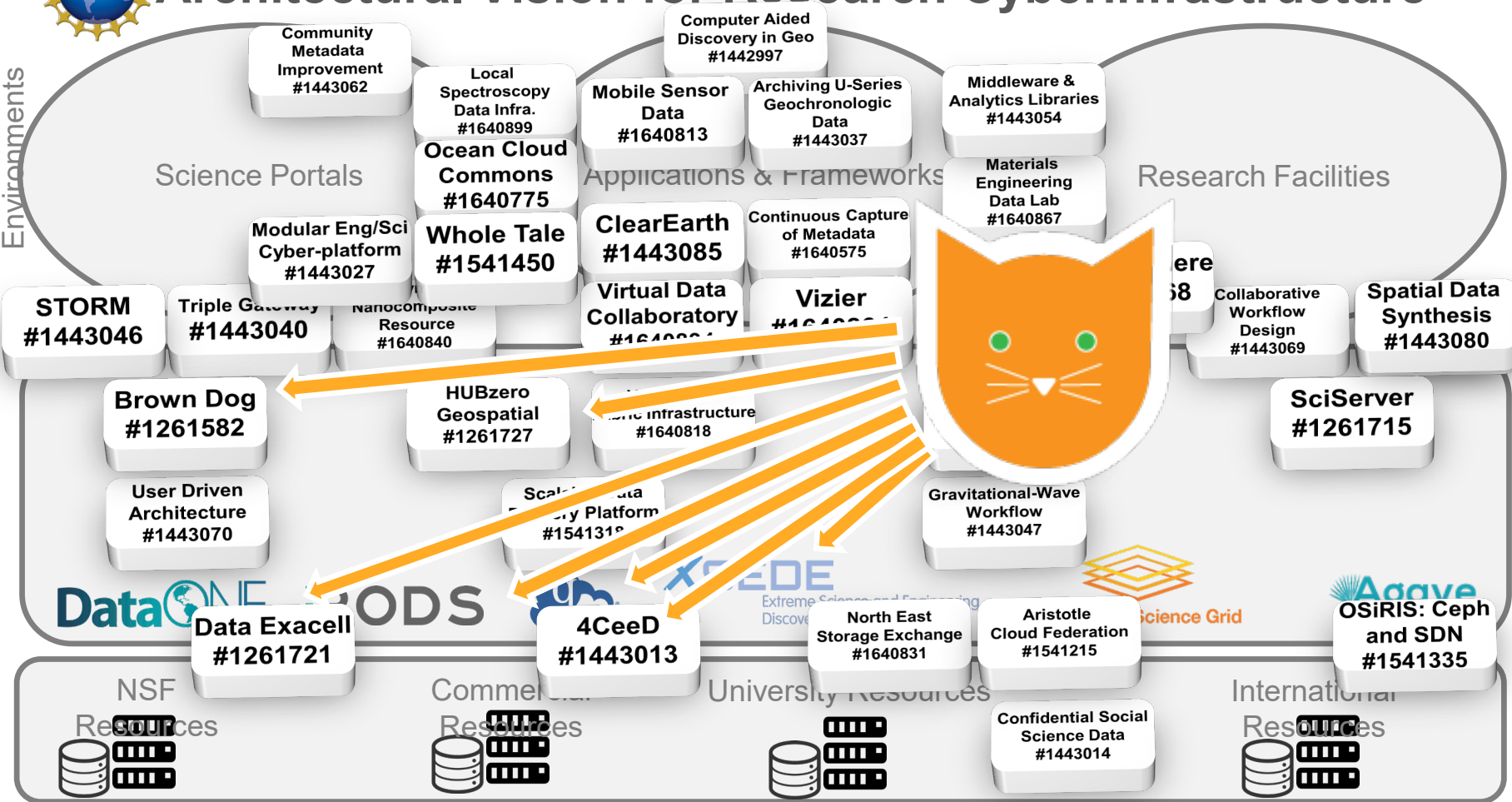
- **Medici** 2009-2013, ONR TRECC (N00014-04-1-0437)
- **Clowder** 2013, NSF Innovative Systems and Software: Applications to NARA Research Problems (OCI-0525308)

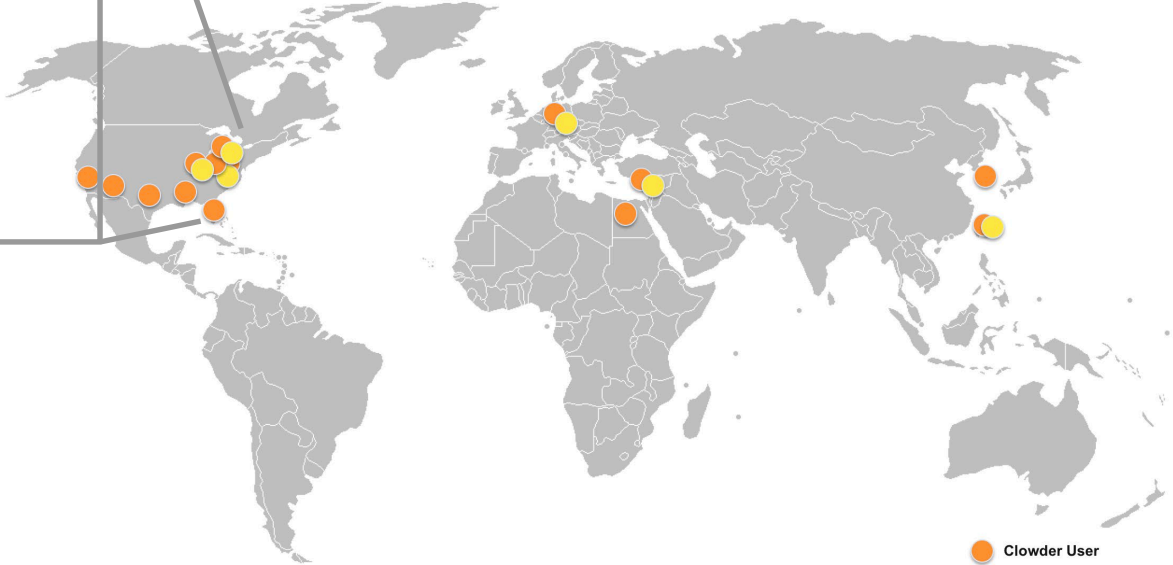
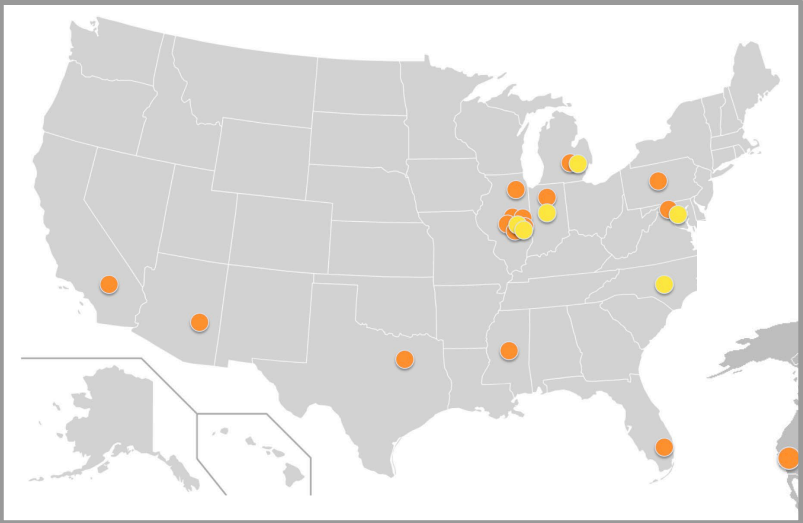


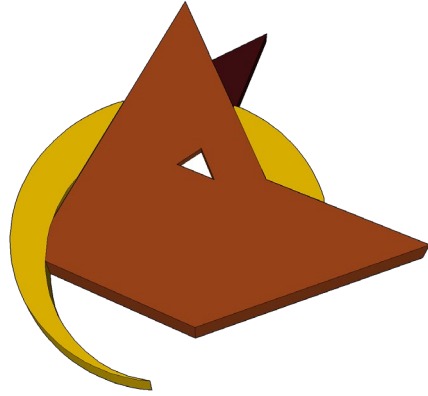


Architectural Vision for Research Cyberinfrastructure

Discipline Specific Environments
Integrative Services
Resources

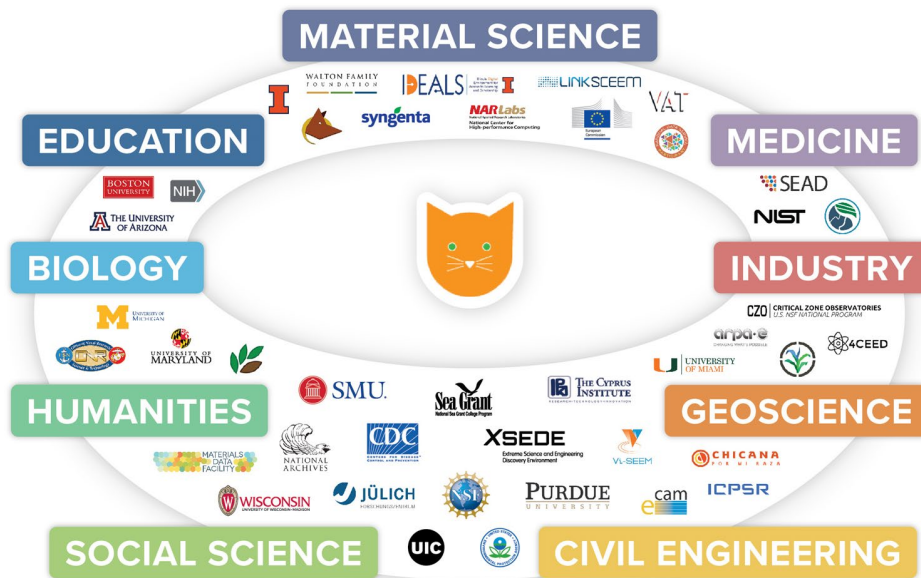






129,839,905 datasets/files transformed

Clowder Community



		Biology	Civil Engineering	Comp. and Inf. Science	Education	Geoscience	Humanities	Industry	Materials Science	Medicine	Social Science
Brown Dog	NSF	X	X	X		X					X
BRACELET	NSF			X					X		
Chicanapormiraza	University of Michigan						X				
Countermeasures against Radiation	BARDA	X								X	
Crowd-Sourced Green Infrastructure	NSF		X								X
DataNet SEAD	NSF, NDS	X	X			X					
EarthCube GeoSemantics	NSF					X					
eCam	European Commission				X						
IML-CZO	NSF	X			X	X					
Immunomodulatory Effects of MSC	NIH									X	
Great Lakes Monitoring	Illinois-Indiana SeaGrant					X					
Great Lakes to Gulf	NGRECC, Walton Foundation					X					
Groupscope	NSF										X
KISTI	KISTI	X	X								
LinkSCEEM	European Commission					X	X				
NARA	NSF			X							
NIST	NIST								X		
PeCAn	NSF	X			X	X					
RIVEEL3D	Cyprus Institute						X				
SIMDAS	European Commission						X				
Southern Methodist University	SMU		X	X							
Syngenta	Syngenta	X						X			
T2-C2	NSF			X					X		
Taiwan NCHC	NCHC			X						X	
TERRA-REF	ARPA-E	X			X	X					
TRECC	ONR				X						
Vector-Borne Disease	CDC	X									
Vi-SEEM	European Commission						X				
XSEDE Decomposing Bodies	NSF			X			X				
XSEDE Image Analysis of Rural Photography	NSF			X			X				
XSEDE Large Scale Video Analytics	NSF			X			X				
XSEDE Real Stories of Bad Kids	NSF			X			X				X

Bringing the Community Together

Collaborative Research: CSSI: Framework: Data: Clowder Open Source Customizable Research Data Management, Plus-Plus, 2018-2023 (OAC-1835834, 1835543, 1835877)

