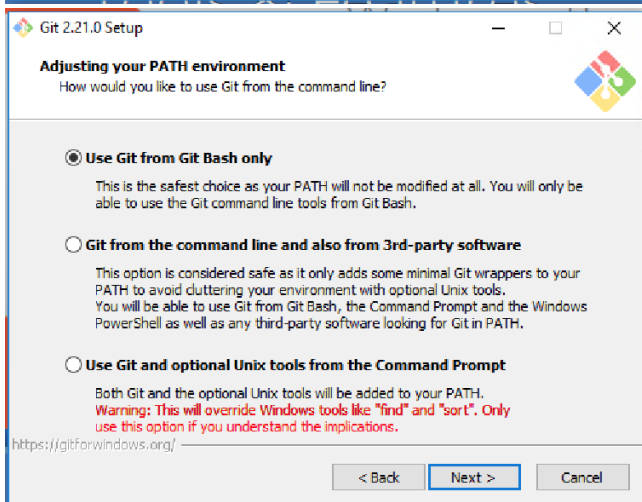
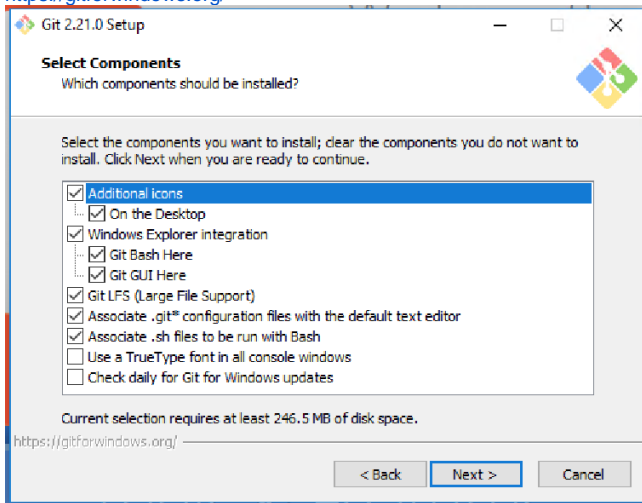


# Setting up Windows VM for ArcGIS extractors

1. Create VM
2. Install ArcGIS 10.4.1 Desktop Version advanced.
  - a. During the installation process select Advanced (ArcInfo) Single Use product.
3. Install Git for windows
  - a. <https://gitforwindows.org/>



4. Clone extractor and pycldowner repositories to ~/Repositories
5. Add Python, and Scripts to Path (for root user)
  - a. For ArcGIS 10.7 you can use C:\Python27\ArcGIS10.7\, and C:\Python27\ArcGIS10.7\Scripts\
6. Pip is installed by ArcGIS, but should be updated
  - a. `python -m pip install --upgrade pip``
7. Install pika
  - a. requests has already been installed, but is needed if it gets removed in a later version of ArcGIS
8. Install Pycldowner
9. Install extractor requirements
  - a. <http://www.7-zip.org/download.html>
  - b. xmltodict
10. Update environment variables for root user. Make sure that Python, python/scripts, and 7zip are available in the system path environment variable.
11. Verify that extractor is running fine
12. Download and Install [NSSM](https://nssm.cc/)

## Additional References

- [Deploying Windows Extractors](#)
- <https://nssm.cc/>